

Total Number of IDP

27

Total Number of Households

7

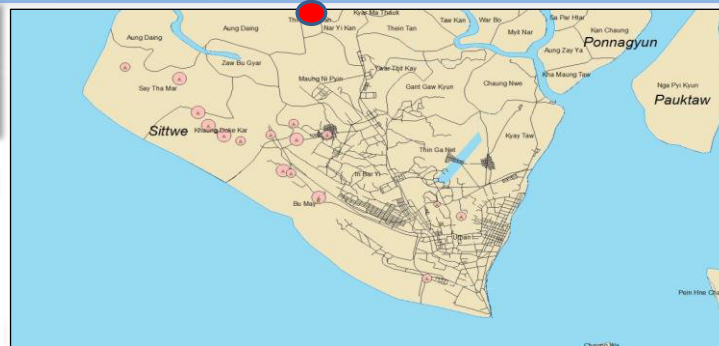
Geographic Data

GPS Coordinates

State / Region : Rakhine
 Township : Sittwe
 Vil. Tract / Town : Thin Pone Tan
 Village/Ward : Thin Pone Tan

Latitude : 20.23°
 Longitude : 92.84°

Available Services (in camp, outside the camp, no access) as of #N/A



The interagency camp profiling process is an on-going activity promoted, coordinated and delivered by the Shelter/NFI/CCCM Cluster. The information is collected from a number of sources and compiled into a series of a single camp profiles. This document represents single camp profile. The source of information are cluster focal points.



Access to Services and Sectoral Needs



Water & Sanitation as of 2014-11-01

Main Source of drinking water
 Ceramic filter coverage 100%
 Water needs Coverage 100%
 Latrine needs coverage 84%
 Latrine gender segregation No
 Hygiene Promotion sensitisation coverage 100%
 Temp. Learn. Space with wash facilities 0-25%
 Last Hygiene Kit distribution 2014-07-28
 Hand Washing facilities Coverage n/a



Health for the period of #N/A



Protection as of 2014-11-01

Child protection case management NA
 Case management - adults NA
 Psychosocial support Yes
 Child friendly spaces (CFS) NA
 Women and girls centre NA
 GBV related health services NA
 Community based protection group NA
 Transferring protection skills NA
 Adolescent assets & life skills building NA
 Protection monitoring Yes
 Safety audits NA
 Family tracing NA



Shelter/NFI as of 2014-11-01



CCCM as of 2014-11-01

CCCM Type Focal Point
 CCCM Organization UNHCR
 Opening Date 0

Complaints mechanism in place

Gaps :

Livelihood :

Population dynamics

Repartition by Ethnicities (estimated)

Food : (last food distributions)



Education as of 2014-11-01

	#TLS	# Enrolled		# Teacher	
		Male	Female	Male	Female
ECCD	0	0	0	0	0
Primary	0	0	0	0	0
Post-Prim.	0	0	0	0	0
Total	0	0	0	0	0



Food (Monthly Household Ration)

Rice 50 kg Salt 0.8 kg
 Pulses 4.8 kg Dried fish 1.9 kg
 Oil 5 l.

Lasts NFI Distributions:



Nutrition as of 2014-10-03

Therapeutic Care Program(OTP/SC) No
 Blanket Sup. Feeding Program(BSFP) No
 Targeted Sup. Feeding for MAM (TSFP) No
 Infant and Young Child Feeding support No
 Mental Health Care Practice(MHCP) Yes
 Micro-nutrient supplementation(MMN) No
 Ante Natal Care activity(ANC) No
 Mental Health Care Practice(MHCP) Yes
 Screening No

For more information, contact UNHCR Yangon Information Management Unit - ricouart@unhcr.org
 or the national CCCM cluster coordinator- benson@unhcr.org

Total Number of IDP

2,942

Total Number of Households

496

Geographic Data

GPS Coordinates

State / Region : Rakhine

Latitude : 20.18°

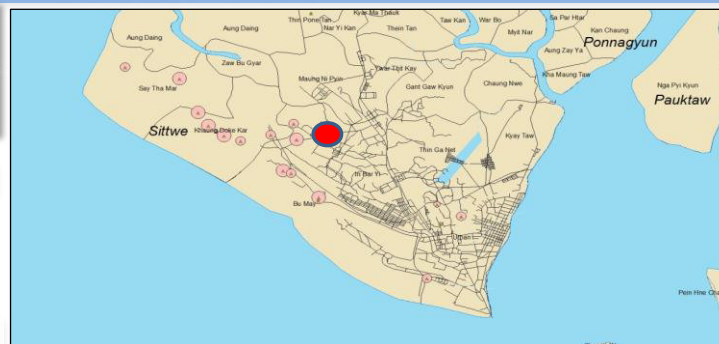
Township : Sittwe

Longitude : 92.84°

Vil. Tract / Town : Bu May

Village/Ward : Kha War De Ywar

Available Services (in camp, outside the camp, no access) as of #N/A



The interagency camp profiling process is an on-going activity promoted, coordinated and delivered by the Shelter/NFI/CCCM Cluster. The information is collected from a number of sources and compiled into a series of a single camp profiles. This document represents single camp profile. The source of information are cluster focal points.



Access to Services and Sectoral Needs



Water & Sanitation as of 2014-11-01

Main Source of drinking water	
Ceramic filter coverage	100%
Water needs Coverage	100%
Latrine needs coverage	71%
Latrine gender segregation	No
Hygiene Promotion sensitisation coverage	100%
Temp. Learn. Space with wash facilities	75-100%
Last Hygiene Kit distribution	2013-07-15
Hand Washing facilities Coverage	20%



Health for the period of #N/A



Protection as of 2014-11-01

Child protection case management	NA
Case management - adults	NA
Psychosocial support	Yes
Child friendly spaces (CFS)	NA
Women and girls centre	NA
GBV related health services	NA
Community based protection group	Yes
Transferring protection skills	NA
Adolescent assets & life skills building	NA
Protection monitoring	Yes
Safety audits	NA
Family tracing	NA



Shelter/NFI as of 2014-11-01



CCCM as of 2014-11-01

CCCM Type	Focal Point
CCCM Organization	Save the children
Opening Date	0

Complaints mechanism in place

Gaps :Livelihood :

Population dynamics

Repartition by Ethnicities (estimated)



Education as of 2014-11-01

	#TLS	# Enrolled		# Teacher	
		Male	Female	Male	Female
ECCD	0	0	0	0	0
Primary	2	598	554	4	2
Post-Prim.	1	48	67	2	1
Total	3	646	621	6	3



Food (Monthly Household Ration)

Rice	50 kg	Salt	0.8 kg
Pulses	4.8 kg	Dried fish	1.9 kg
Oil	5 l.		

Lasts NFI Distributions:

Nutrition as of 2014-10-03

Therapeutic Care Program(OTP/SC)	Yes
Blanket Sup. Feeding Program(BSFP)	No
Targeted Sup. Feeding for MAM (TSFP)	Yes
Infant and Young Child Feeding support	Yes
Mental Health Care Practice(MHCP)	Yes
Micro-nutrient supplementation(MMN)	Yes
Ante Natal Care activity(ANC)	Yes
Mental Health Care Practice(MHCP)	Yes
Screening	Yes

For more information, contact UNHCR Yangon Information Management Unit - ricouart@unhcr.org or the national CCCM cluster coordinator- benson@unhcr.org

Total Number of IDP

2,951

Total Number of Households

518

Geographic Data

GPS Coordinates

State / Region : Rakhine

Latitude : 20.17°

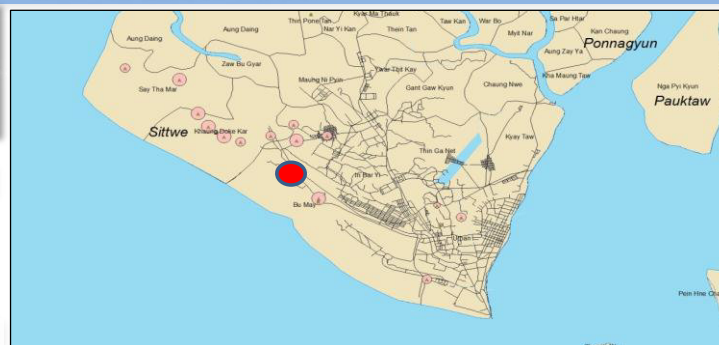
Township : Sittwe

Longitude : 92.83°

Vil. Tract / Town : Bu May

Village/Ward : Dar Paing Ywar Thit

Available Services (in camp, outside the camp, no access) as of #N/A



The interagency camp profiling process is an on-going activity promoted, coordinated and delivered by the Shelter/NFI/CCCM Cluster. The information is collected from a number of sources and compiled into a series of a single camp profiles. This document represents single camp profile. The source of information are cluster focal points.



Access to Services and Sectoral Needs



Water & Sanitation as of 2014-11-01

Main Source of drinking water	
Ceramic filter coverage	9%
Water needs Coverage	19%
Latrine needs coverage	3%
Latrine gender segregation	No
Hygiene Promotion sensitisation coverage	75%
Temp. Learn. Space with wash facilities	n/a
Last Hygiene Kit distribution	2014-02-26
Hand Washing facilities Coverage	n/a



Health for the period of #N/A



Protection as of 2014-11-01

Child protection case management	NA
Case management - adults	NA
Psychosocial support	Yes
Child friendly spaces (CFS)	NA
Women and girls centre	NA
GBV related health services	NA
Community based protection group	NA
Transferring protection skills	NA
Adolescent assets & life skills building	NA
Protection monitoring	Yes
Safety audits	NA
Family tracing	NA



Shelter/NFI as of 2014-11-01



CCCM as of 2014-11-01

CCCM Type	Focal Point
CCCM Organization	UNHCR
Opening Date	0

Complaints mechanism in place

Gaps :

Livelihood :

Population dynamics

Repartition by Ethnicities (estimated)



Education as of 2014-11-01

	#TLS	# Enrolled		# Teacher	
		Male	Female	Male	Female
ECCD	0	0	0	0	0
Primary	2	0	0	4	4
Post-Prim.	0	0	0	0	0
Total	2	0	0	4	4



Food (Monthly Household Ration)

Rice	50 kg	Salt	0.8 kg
Pulses	4.8 kg	Dried fish	1.9 kg
Oil	5 l.		

Lasts NFI Distributions:

DRC

2014-03-01



Nutrition as of 2014-10-03

Therapeutic Care Program(OTP/SC)	Yes
Blanket Sup. Feeding Program(BSFP)	No
Targeted Sup. Feeding for MAM (TSFP)	Yes
Infant and Young Child Feeding support	Yes
Mental Health Care Practice(MHCP)	Yes
Micro-nutrient supplementation(MMN)	Yes
Ante Natal Care activity(ANC)	No
Mental Health Care Practice(MHCP)	Yes
Screening	No

For more information, contact UNHCR Yangon Information Management Unit - ricouart@unhcr.org or the national CCCM cluster coordinator- benson@unhcr.org

Total Number of IDP

5,500

Total Number of Households

979

Geographic Data

GPS Coordinates

State / Region : Rakhine

Latitude : 20.16°

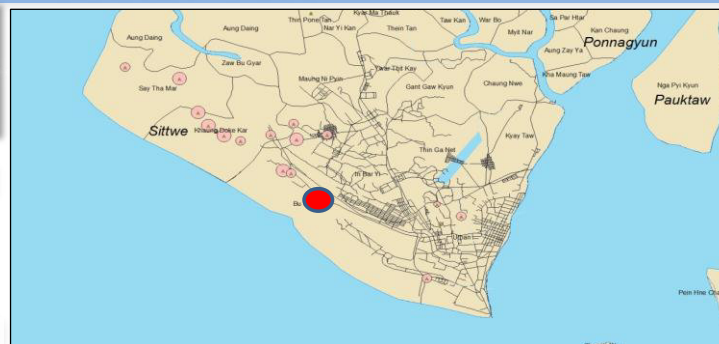
Township : Sittwe

Longitude : 92.84°

Vil. Tract / Town : Bu May

Village/Ward : Thea Chaung Ku Lar

Available Services (in camp, outside the camp, no access) as of #N/A



The interagency camp profiling process is an on-going activity promoted, coordinated and delivered by the Shelter/NFI/CCCM Cluster. The information is collected from a number of sources and compiled into a series of a single camp profiles. This document represents single camp profile. The source of information are cluster focal points.



Access to Services and Sectoral Needs



Water & Sanitation as of 2014-11-01

Main Source of drinking water	
Ceramic filter coverage	100%
Water needs Coverage	100%
Latrine needs coverage	7%
Latrine gender segregation	No
Hygiene Promotion sensitisation coverage	75%
Temp. Learn. Space with wash facilities	n/a
Last Hygiene Kit distribution	2014-02-23
Hand Washing facilities Coverage	n/a



Health for the period of #N/A



Protection as of 2014-11-01

Child protection case management	NA
Case management - adults	NA
Psychosocial support	Yes
Child friendly spaces (CFS)	NA
Women and girls centre	NA
GBV related health services	NA
Community based protection group	NA
Transferring protection skills	NA
Adolescent assets & life skills building	NA
Protection monitoring	Yes
Safety audits	NA
Family tracing	NA



Shelter/NFI as of 2014-11-01



CCCM as of 2014-11-01

CCCM Type	Focal Point
CCCM Organization	UNHCR
Opening Date	0

Complaints mechanism in place

Gaps :Livelihood :

Population dynamics

Repartition by Ethnicities (estimated)



Education as of 2014-11-01

	#TLS	# Enrolled		# Teacher	
		Male	Female	Male	Female
ECCD	0	0	0	0	0
Primary	0	0	0	0	0
Post-Prim.	0	0	0	0	0
Total	0	0	0	0	0



Food (Monthly Household Ration)

Rice	50 kg	Salt	0.8 kg
Pulses	4.8 kg	Dried fish	1.9 kg
Oil	5 l.		

Lasts NFI Distributions:

UNHCR 2014-06-08



Nutrition as of 2014-10-03

Therapeutic Care Program(OTP/SC)	Yes
Blanket Sup. Feeding Program(BSFP)	No
Targeted Sup. Feeding for MAM (TSFP)	Yes
Infant and Young Child Feeding support	Yes
Mental Health Care Practice(MHCP)	Yes
Micro-nutrient supplementation(MMN)	Yes
Ante Natal Care activity(ANC)	No
Mental Health Care Practice(MHCP)	Yes
Screening	No

For more information, contact UNHCR Yangon Information Management Unit - ricouart@unhcr.org or the national CCCM cluster coordinator- benson@unhcr.org

Total Number of IDP

226

Total Number of Households

41

Geographic Data

GPS Coordinates

State / Region : Rakhine

Latitude : 20.18°

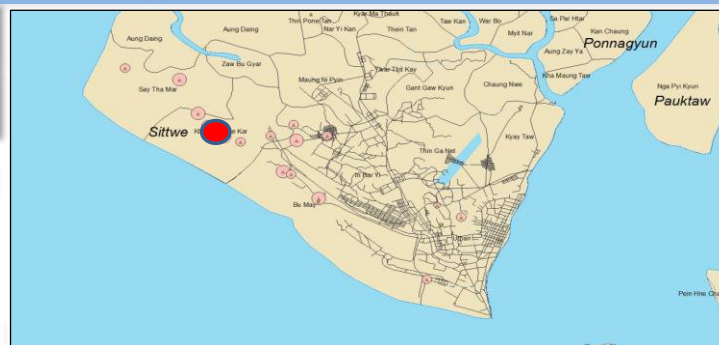
Township : Sittwe

Longitude : 92.80°

Vil. Tract / Town : Khaung Doke Kar

Village/Ward : Baw Du Hpa

Available Services (in camp, outside the camp, no access) as of #N/A



The interagency camp profiling process is an on-going activity promoted, coordinated and delivered by the Shelter/NFI/CCCM Cluster. The information is collected from a number of sources and compiled into a series of a single camp profiles. This document represents single camp profile. The source of information are cluster focal points.



Access to Services and Sectoral Needs



Water & Sanitation as of 2014-11-01

Main Source of drinking water	
Ceramic filter coverage	38%
Water needs Coverage	100%
Latrine needs coverage	100%
Latrine gender segregation	No
Hygiene Promotion sensitisation coverage	75%
Temp. Learn. Space with wash facilities	n/a
Last Hygiene Kit distribution	2014-02-23
Hand Washing facilities Coverage	n/a



Health for the period of #N/A



Protection as of 2014-11-01

Child protection case management	NA
Case management - adults	NA
Psychosocial support	Yes
Child friendly spaces (CFS)	NA
Women and girls centre	NA
GBV related health services	NA
Community based protection group	NA
Transferring protection skills	NA
Adolescent assets & life skills building	NA
Protection monitoring	Yes
Safety audits	NA
Family tracing	NA



Shelter/NFI as of 2014-11-01



CCCM as of 2014-11-01

CCCM Type	Focal Point
CCCM Organization	UNHCR
Opening Date	0

Complaints mechanism in place

Gaps :Livelihood :

Population dynamics

Repartition by Ethnicities (estimated)



Education as of 2014-11-01

	#TLS	# Enrolled		# Teacher	
		Male	Female	Male	Female
ECCD	0	0	0	0	0
Primary	2	157	117	4	2
Post-Prim.	0	0	0	0	0
Total	2	157	117	4	2



Food (Monthly Household Ration)

Rice	50 kg	Salt	0.8 kg
Pulses	4.8 kg	Dried fish	1.9 kg
Oil	5 l.		

Lasts NFI Distributions:

Nutrition as of 2014-10-03

Therapeutic Care Program(OTP/SC)	Yes
Blanket Sup. Feeding Program(BSFP)	No
Targeted Sup. Feeding for MAM (TSFP)	Yes
Infant and Young Child Feeding support	Yes
Mental Health Care Practice(MHCP)	Yes
Micro-nutrient supplementation(MMN)	Yes
Ante Natal Care activity(ANC)	No
Mental Health Care Practice(MHCP)	Yes
Screening	No

For more information, contact UNHCR Yangon Information Management Unit - ricouart@unhcr.org or the national CCCM cluster coordinator- benson@unhcr.org